

A scenic view of a lake with a forest in the background and a red canoe in the foreground. The water is dark and rippled, reflecting the sky. The forest is dense with tall evergreen trees and some deciduous trees with autumn foliage. The sky is blue with light clouds. The canoe is red with a silver metal tip and has a small orange light on its side. The text "E. coli in Surface Waters" is overlaid in white, italicized font.

E. coli in Surface Waters

Molly Rippke
517-284-5547
rippkem@michigan.gov

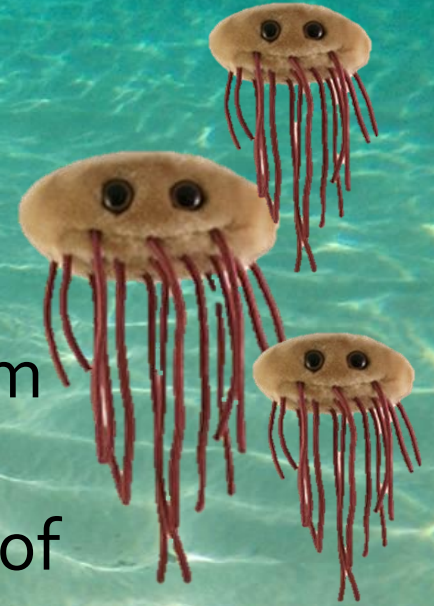


Overall purpose of this presentation

- What is *E. coli* and how much is too much?
- What are the sources of *E. coli*?
- How do we monitor *E. coli*?

E. coli Water Quality Standard

- *E. coli* is present in the digestive system and feces of mammals and birds
- *E. coli* indicates the possible presence of other pathogens that can cause gastroenteritis and more serious diseases
- Michigan has a water quality standard designed to protect human health during recreation



E. coli in Surface Water

- Partial body contact – year-round
 - **1000 *E.coli* per 100mL**
- Total body contact – May 1-October 31
 - **300 *E.coli* per 100mL as a daily max.**
 - **130 *E.coli* per 100mL as a 30-day geometric mean**





“All rivers
lead to
the beach”

CAUTION

This river may contain harmful bacteria.

Testing has shown that this body of water is often polluted and is not safe for swimming.

How can you enjoy this river safely?

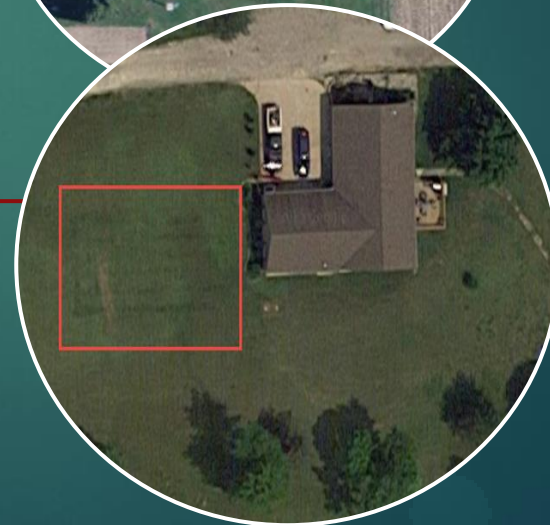
- Avoid the river during and immediately after rainfall.**
- Do not let the water get in your mouth, nose or eyes.**
- Wash your hands with soap and water before eating.**
- Shower when you return home.**



Poor location
(soils, lot size, etc)



Old systems




Maintenance issues



Failing Septics

City Health Department

- 
- A photograph of a lawn with a large, shallow, circular hole in the center, surrounded by grass and a small tree in the background. The hole is filled with water, and the surrounding grass is green. The background shows a small tree and a lawn.
- 1.4 million systems in Michigan
 - 25% (or more!) may be failing
 - County or local sanitary health codes are the primary means of regulation

Livestock Agriculture



Livestock

▶ Land-application of manure



▶ Livestock with access to lakes, rivers, and stream




▶ **Livestock with access to lakes, rivers, and stream**



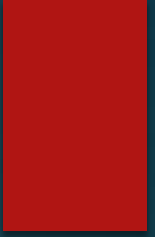
▶ Pasture runoff



Illegal Sources



**Barn
Wash
Water**



Illicit discharges from Homes/businesses



Pets



•Nuisance Wildlife



How widespread is this problem?

WE ESTIMATE THAT
ABOUT 50% OF
MICHIGAN RIVERS
ARE IMPAIRED

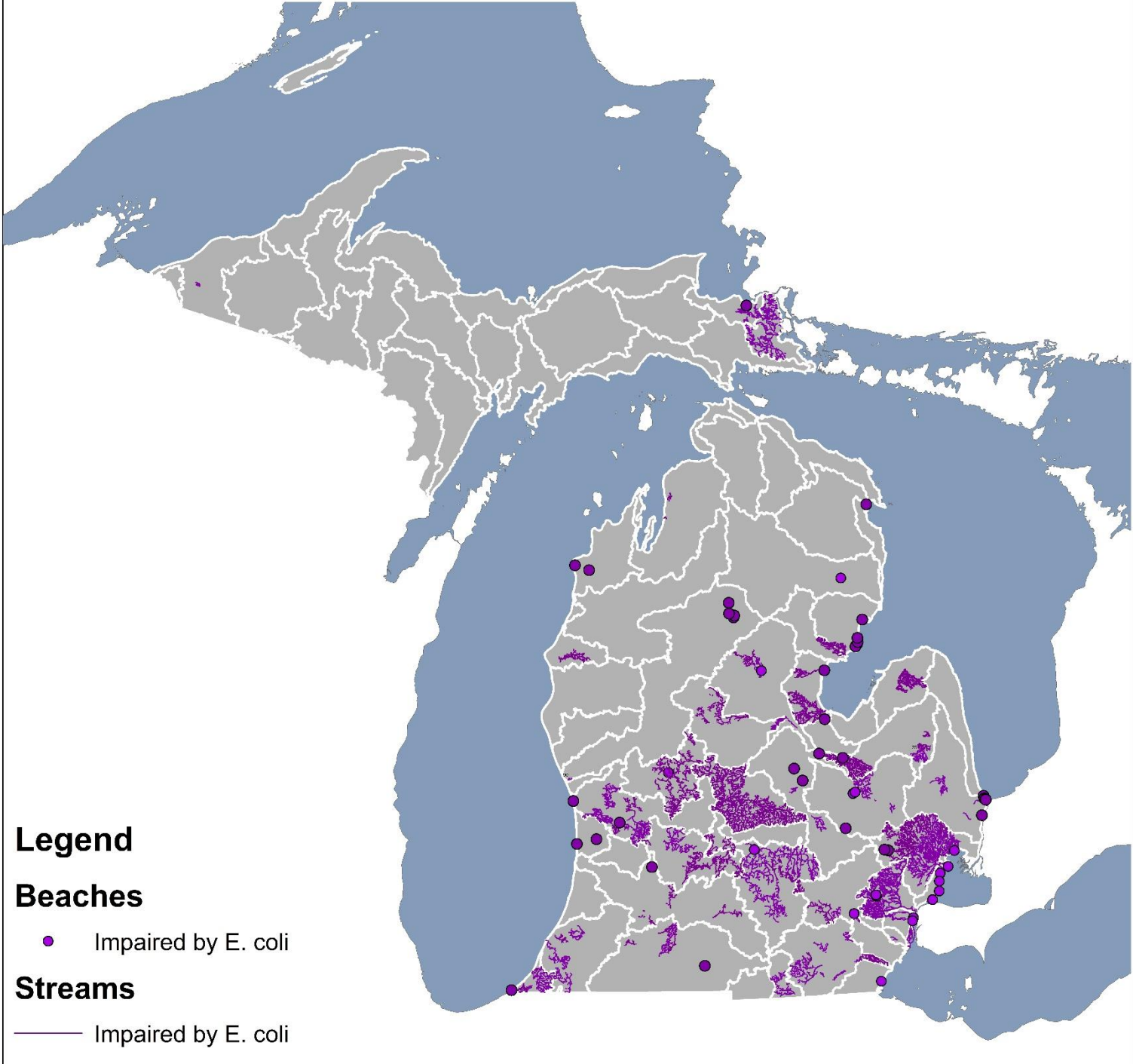
Legend

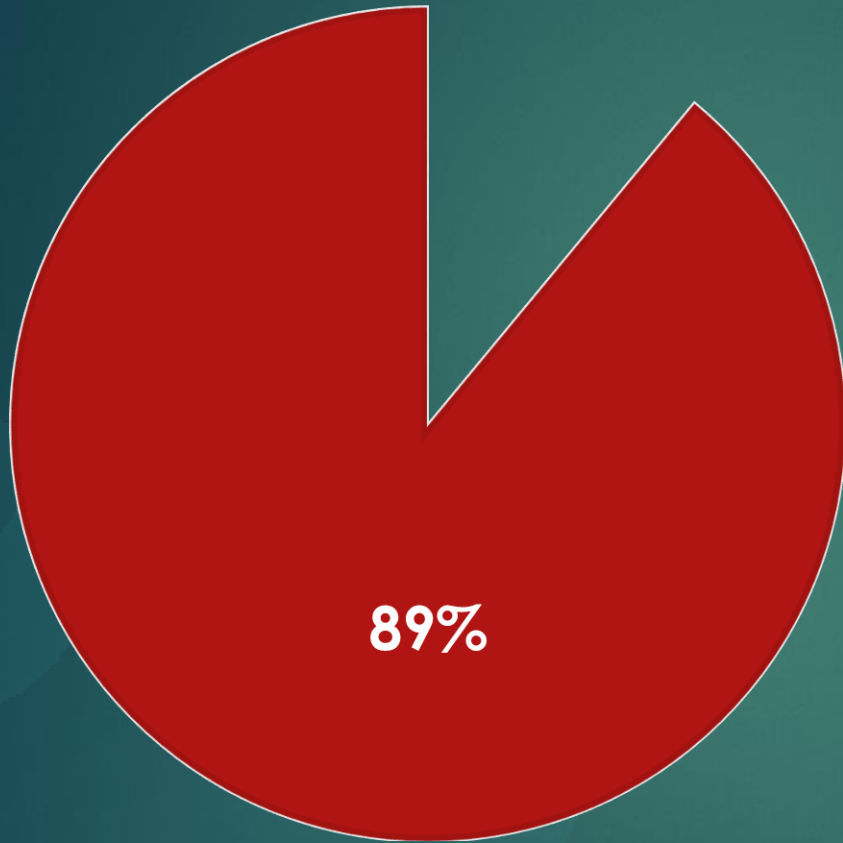
Beaches

● Impaired by E. coli

Streams

— Impaired by E. coli





89% OF OUR
RIVER MILES
DON'T HAVE
ENOUGH
DATA



E. coli Monitoring

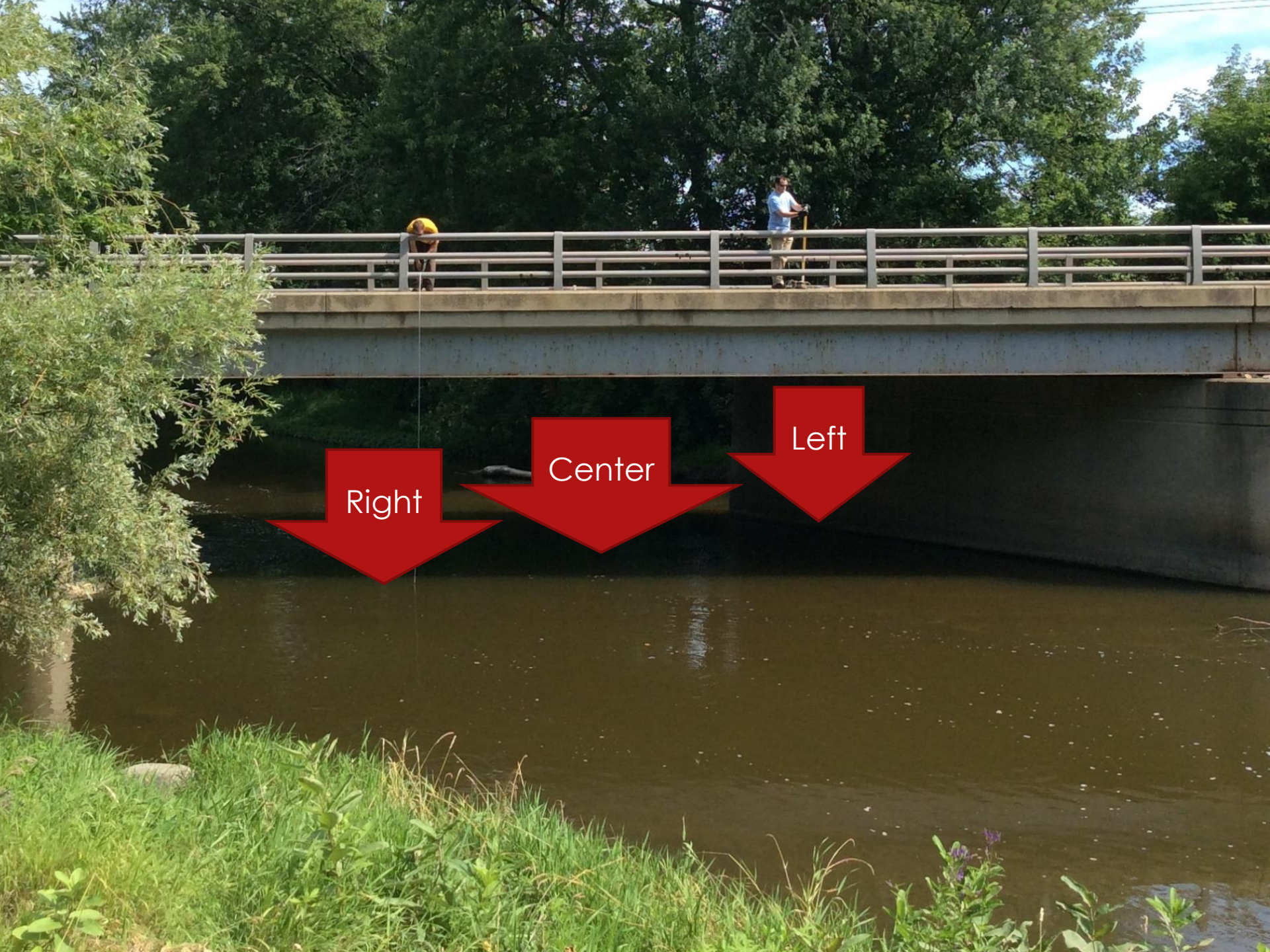
- How much data is needed?
- How should it be collected?





- Currently the standard minimum dataset size (for the DEQ to draw a conclusion) is 5 sampling events
- Our rules require 3 samples per site, per event





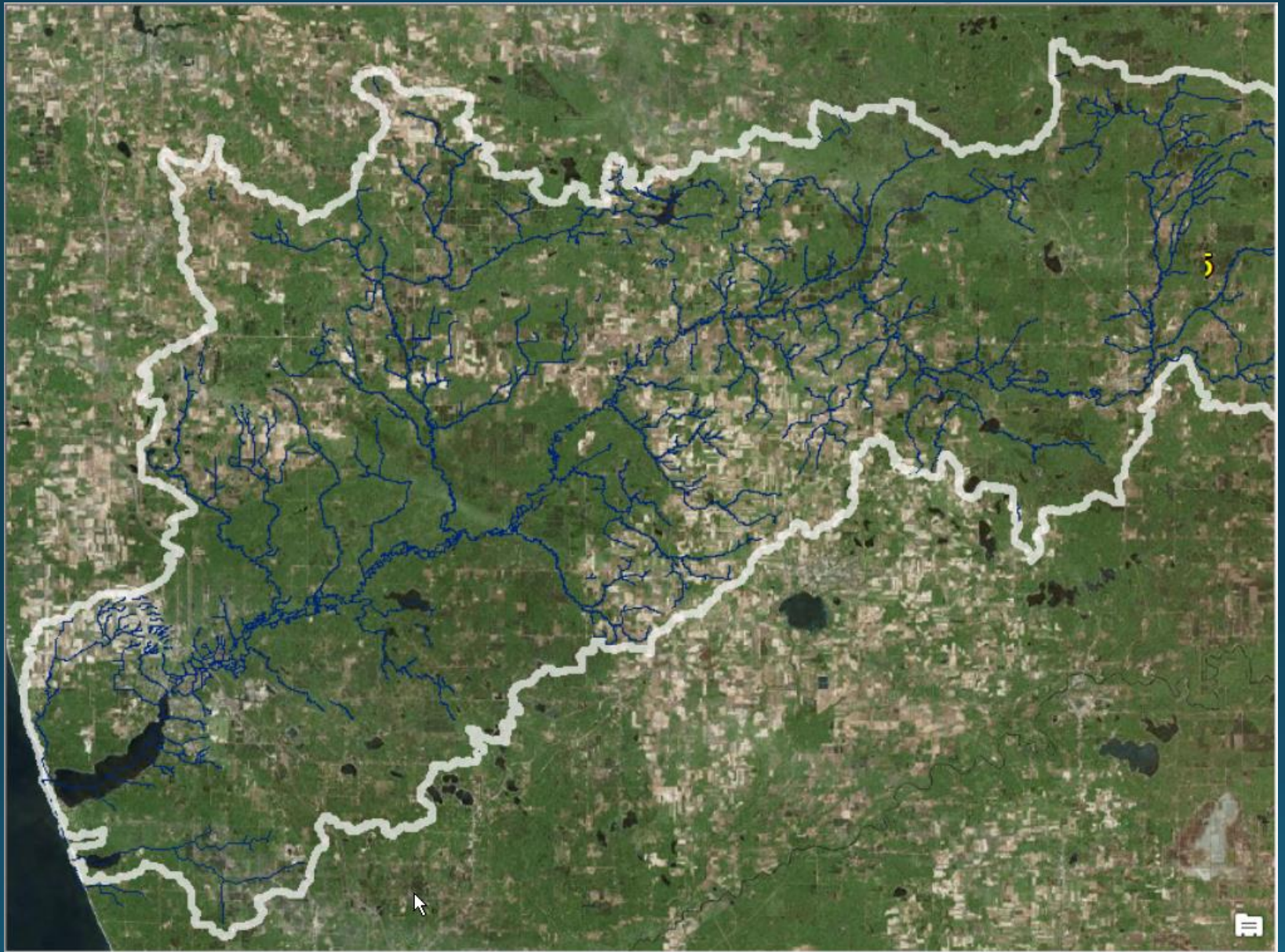
Right

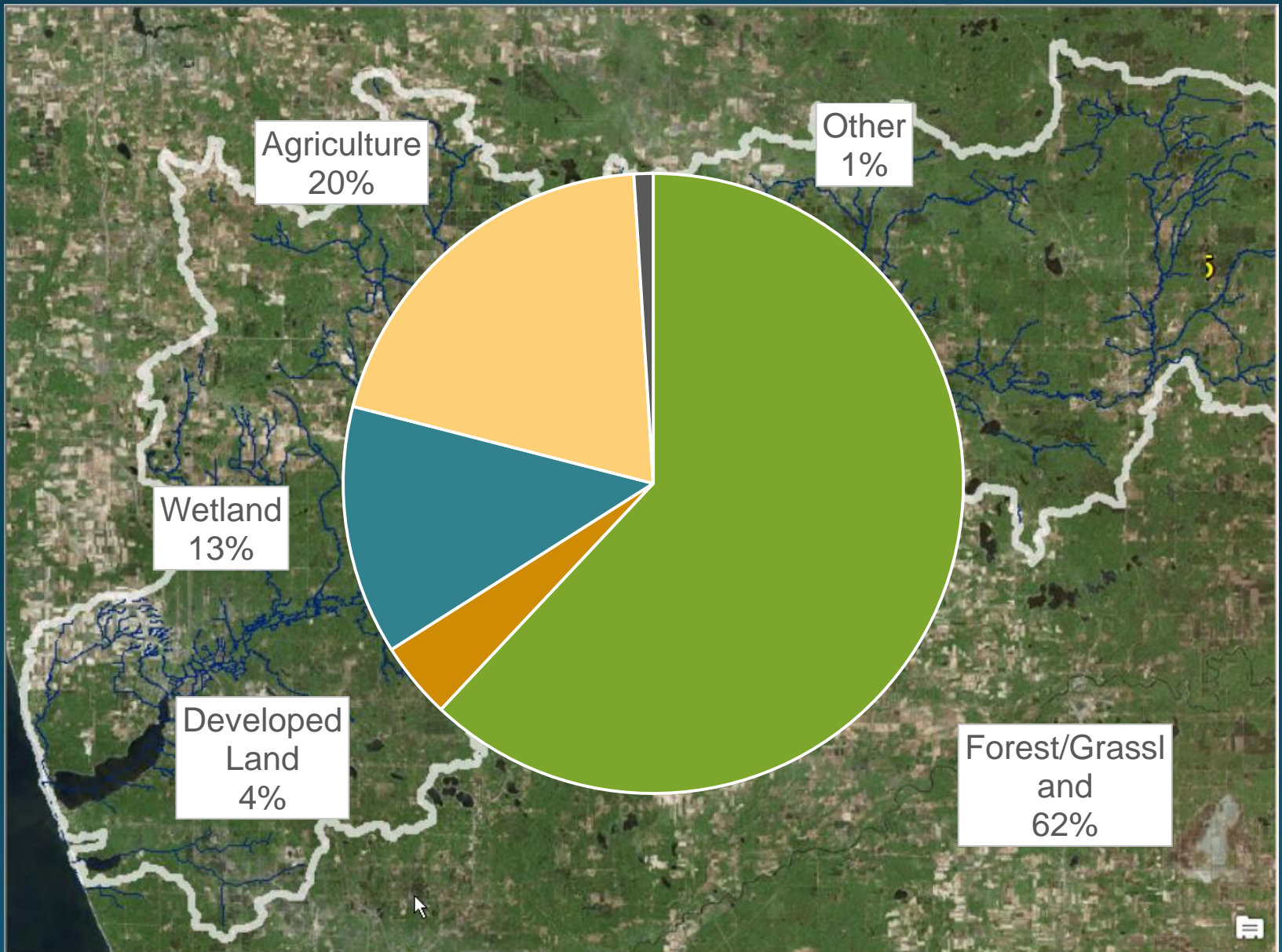
Center

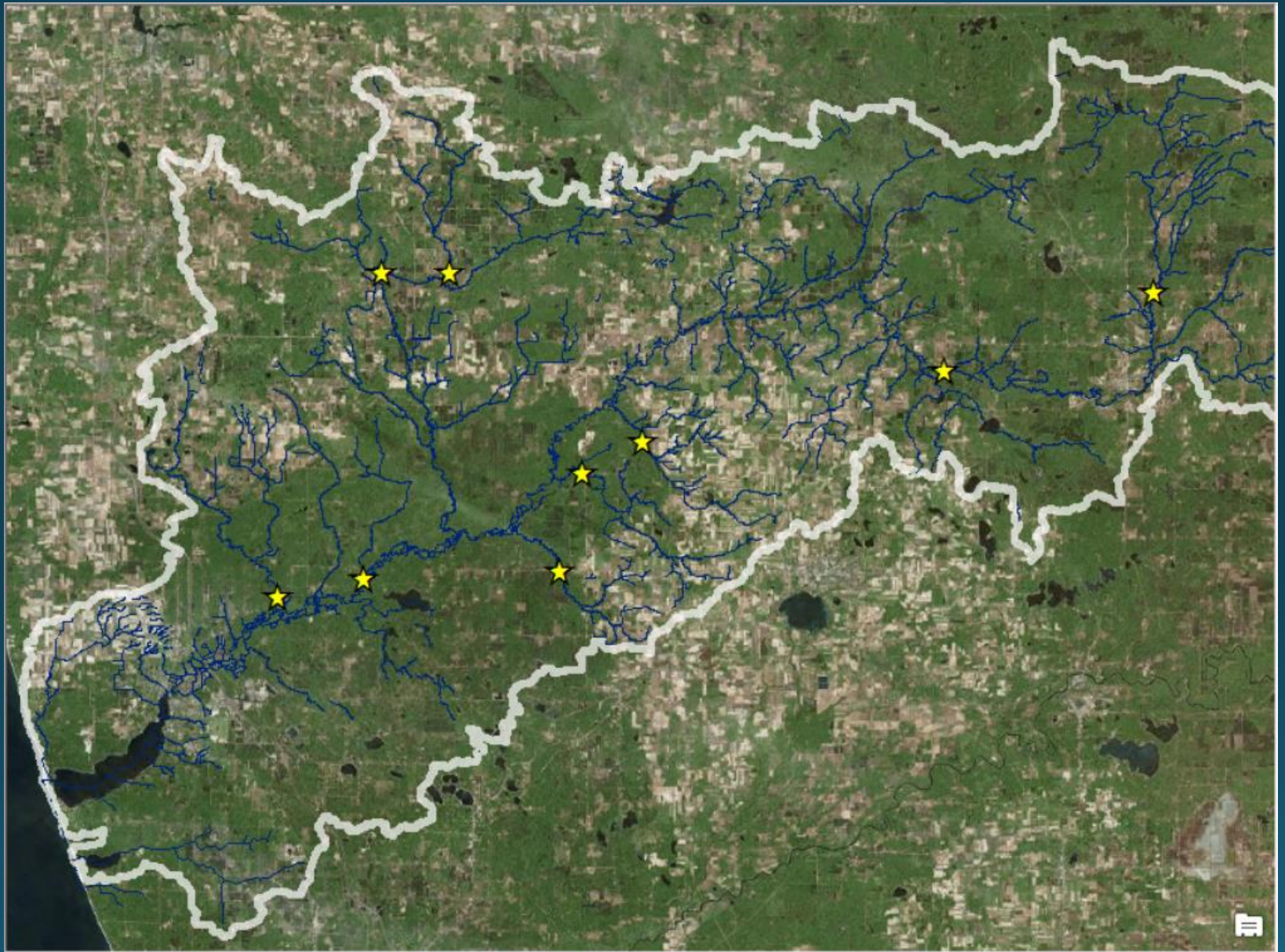
Left

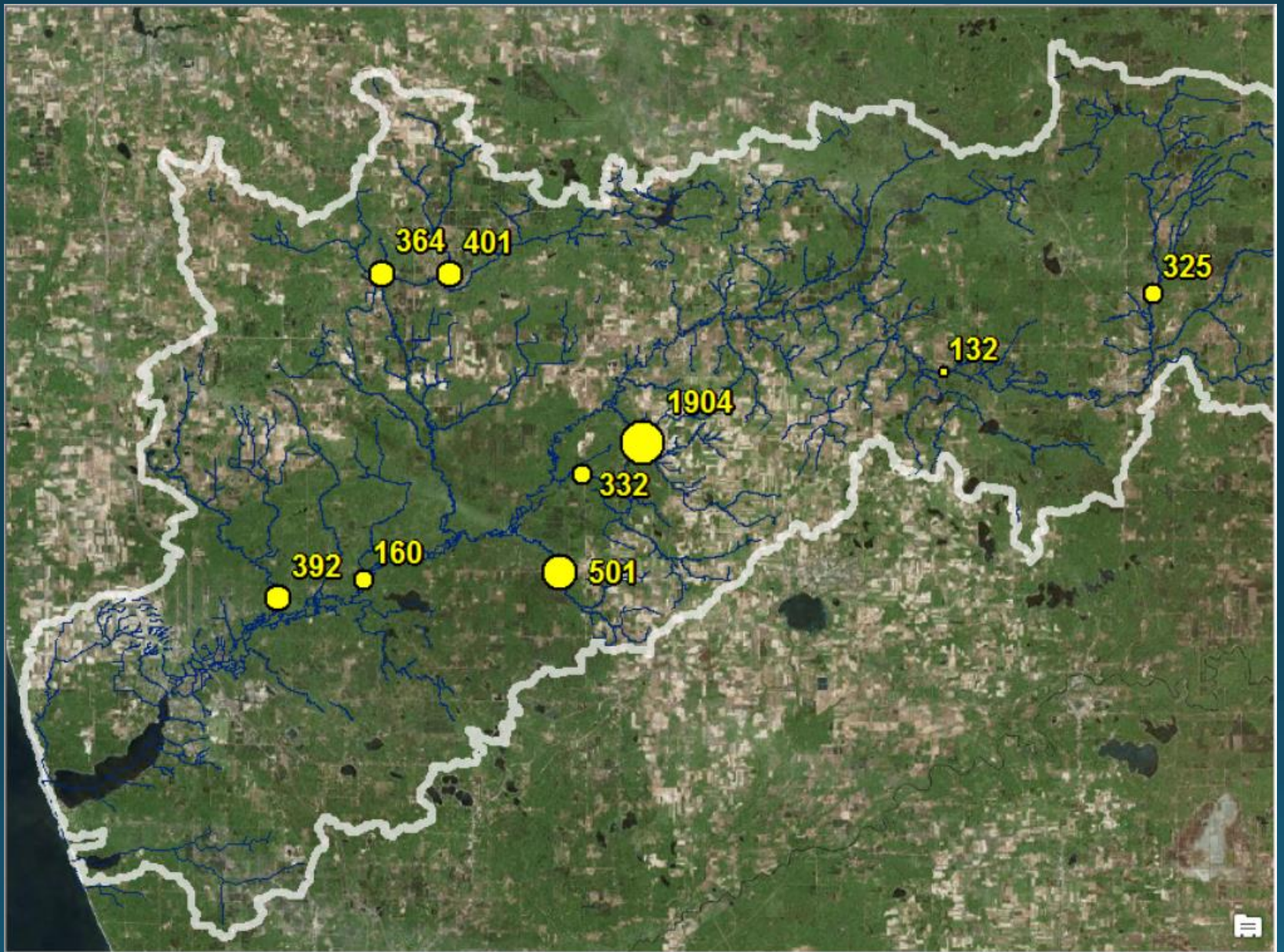


Which stream has the highest *E. coli*?











Which stream has the highest *E. coli*?

The DEQ may be
able to monitor in
your area!

Detailed Instructions and
Monitoring Request Form:

Go to www.Michigan.gov/waterquality
And click on “monitoring request form”

October

31

Are there Volunteer Monitoring Opportunities?

- ▶ Michigan does not currently have an official volunteer monitoring program for *E. coli*.
- ▶ However....*E. coli* data can be collected by anyone, as long as they follow acceptable quality control procedures.
- ▶ A **quality assurance project plan** is the best way to establish quality control.
- ▶ The DEQ has examples we can share and expertise to help!



www.Michigan.gov/ecolitmdl

Public Outreach for the Draft Statewide *E. coli* TMDL

As part of efforts to inform and educate, the [draft Statewide *E. coli* TMDL](#) is now available for public discussion. **Comments received by March 17th will be incorporated into the next draft.**

A new [statewide, interactive mapping tool](#) is available to assist in identifying impacted areas as well as provide resources for getting involved in efforts to reduce the *E. coli* levels. The purpose is to empower local communities to protect our waters.

- [Draft Statewide *E. coli* TMDL](#)
- [Map Help Document](#)
- [E. coli Success Stories](#)

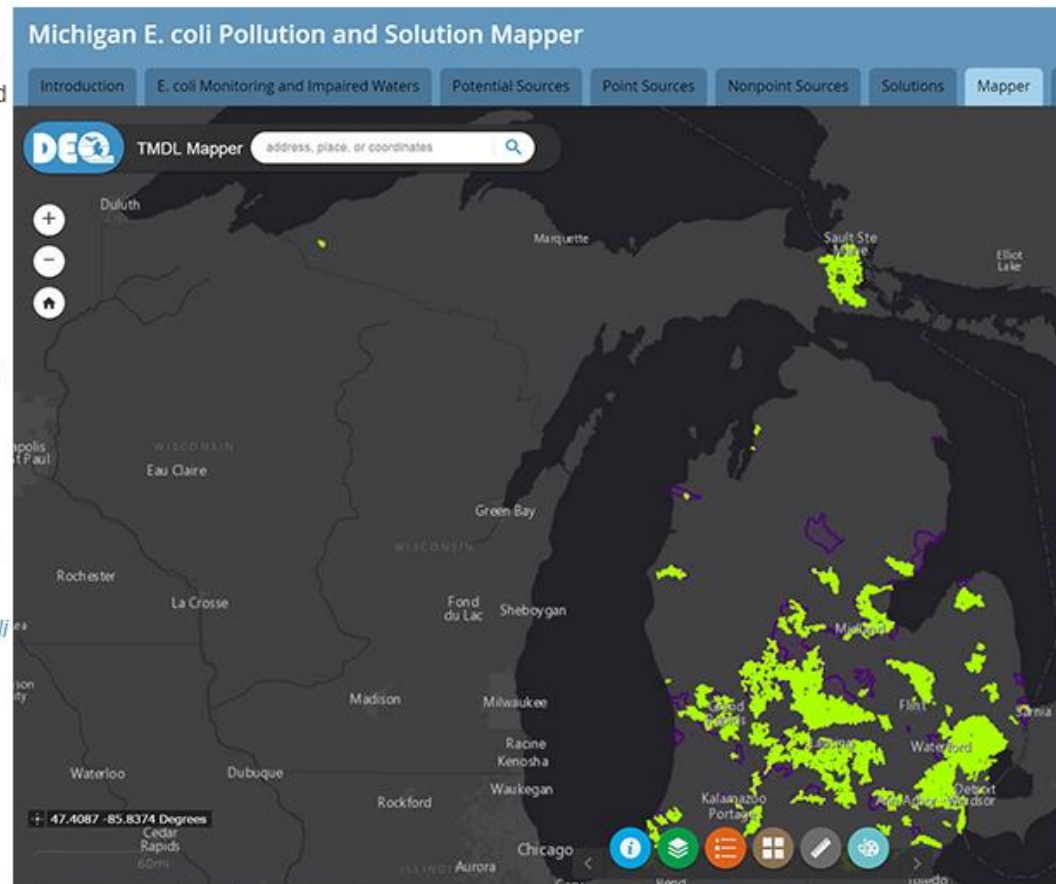
Educational presentations from MDEQ staff are also available. If your group is interested in a presentation, please complete the [TMDL presentation request form](#). Four webinars took place throughout February and March, 2017.

Recorded versions are available by clicking on the following topics:

- [General Overview of the Statewide *E. coli* TMDL](#)
- [Nonpoint Sources](#)
- [Information for MS4 Permittees](#)
- [Information for Industrial Stormwater Permittees](#)

Additional Resources

- [Permit Holders and Landowners](#)



A scenic view of a lake with a forest in the background and a red canoe in the foreground. The water is dark and reflects the sky. The forest is dense with tall trees, some with autumn-colored leaves. The canoe is red and has a silver tip. The text "Questions?" is overlaid in the center of the image.

Questions?

Molly Rippke
517-284-5547
rippkem@michigan.gov